



Plug, play, and weld.



Mission:

Supply the right robotic welding packages and solutions for small & medium-size enterprise worldwide.

Vision:

Welding robot of effective utility and affordability for SME.

Strong R&D Capability

- Core team of highly-educated scientists graduating from top universities;
- Experts in control algorithm with over 15 years experience of R&D;
- Hand-on experience in development of motion-control technology, solutions, and industrial robots.

Deep Insights of Customer Demands

- 20+ years' experience of expertise in field business with deep understanding of welding SMEs' pain-points;
- Successful experience in business management for 2 public companies manufacturing welding equipment;
- Knowledge and know-how to support both channel partners and end-customers from different countries, for both commercial and technical tasks.


National High-tech Enterprise since 2017



Holding ownership of 28 technology patents



CONTENTS

	
Robot Controller: RMC 201 & RMC 203	01
FastPendant	02
RM 1450/6 HW	03
RM 2000/6 HW	04
RM 1500/10	05
Robotic MIG/MAG welding power source	06
Robotic MIG/MAG torch	09
External motional devices	10

Robot Controller



RMC 201



RMC 203

Classification		RMC 201	RMC 203
Controller's Hardware		4-core processor	
		RAM : 2GB	
		Flash disk for mass storage	
		USB memory connector	
		EtherCAT bus	
Operational System		Senou Lite	
Safety		Emergency stop and servo braking	
		Guardrail switch	
		Anti-collision for welding torches	
Programming		Teaching	
Operational Mode		Teach / Play / Remote control	
Error Detection		Error detection for emergency stop, servo, torch collision, arc start interruption, movement path, over-speed, etc.	
Motion Capabilities		Point-to-point (joint motion), straight line,circular	
Programming		Movement / Logic / Applicationins & Process / Arithmetic	
External Axis		Available upon request	
Communication	EtherCAT :	3 in total; 1 available for external devices	
	CAN :	1 reserved	
	Digital input	8 in total, 4 available for external devices	
	Digital output	12 in total, 6 available for external devices	
	Analog output	2 (0-10V), occupied by welding power source	
Application	MIG/MAG welding	Built-in with MIG/MAG power source	
		Ending arc / Crater arc	
		Individual welding parameter for each path	
		Seam tracking thru welding arc (external sensor requested)	
	Laser welding	Standard	
Enviroment	Ambient	0-45°C	
	Relative humidity :	Max. 95%	
	Protection level	IP 31	
Electrical	Input power	AC 1P 220 V	AC 3P 380 V
Physical	Size (W / D / H)	550 mm / 430 mm / 710 mm	550 mm / 542 mm / 710mm
	Weigth	27 kg	44.5 kg

FastPendant

Robotic MIG/MAG welding

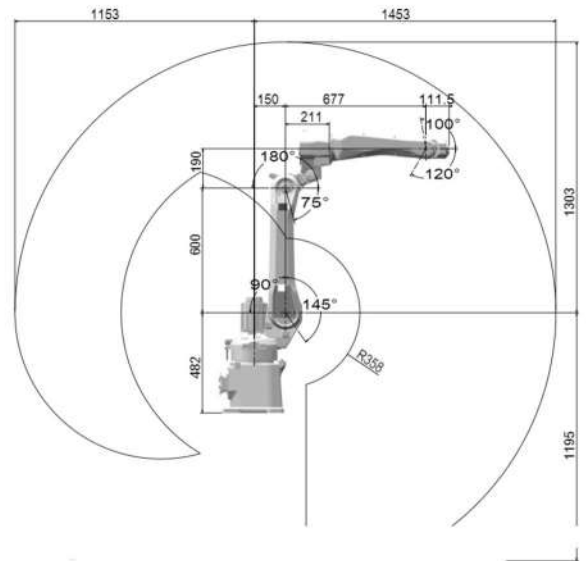


Robotic laser welding

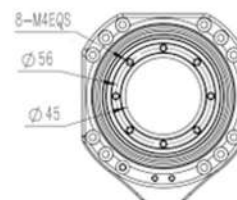
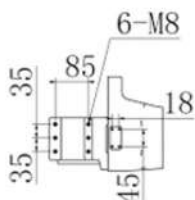
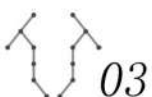
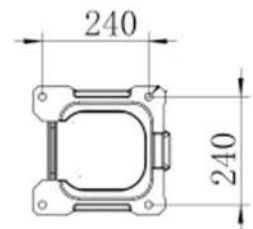
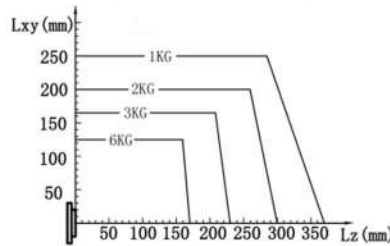
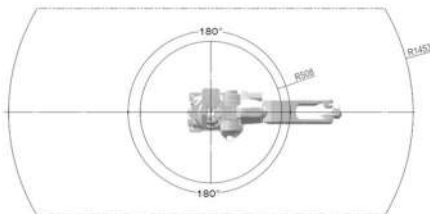


RM 1450/6 HW

Specification	
Number of axis	6(J 1, J 2, J 3, J 4, J 5, J 6)
Working range	1453mm
Rated payload	6 kg
Repeatability	±0.05mm
Mounting position	Floor, wall, ceiling
Protection	
Protection rating	IP65
Controller	
Controller	RMC 201/RMC 203
Control system	Senou Lite
Electrical connections	
Supply voltage	220V
Power consumption(average)	3 kwh
Physical	
Weight	130 kg
Environment	
Temperature during operation	0-45°
Humidity	20-80%(no condensation)
Noise level	< 85 db



Axis	Working range	Max. speed
J 1	-180°/+180°	167°/S
J 2	-145°/+90°	155°/S
J 3	-90°/+180°	357°/S
J 4	-170°/+170°	317°/S
J 5	-120°/+120°	317°/S
J 6	-540°/+540°	925°/S

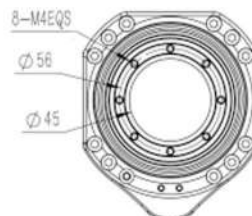
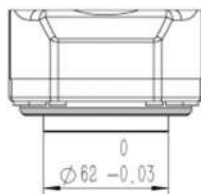
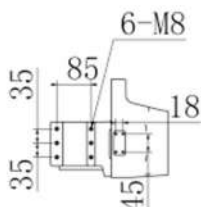
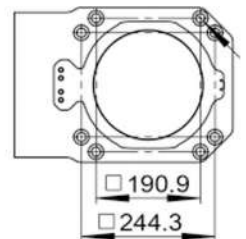
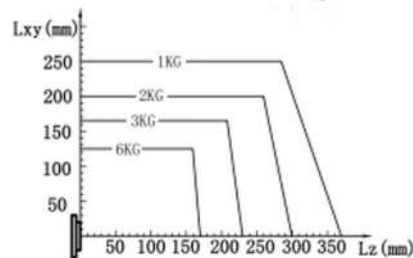
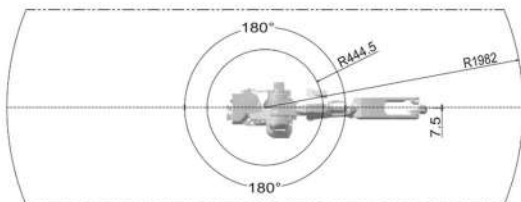
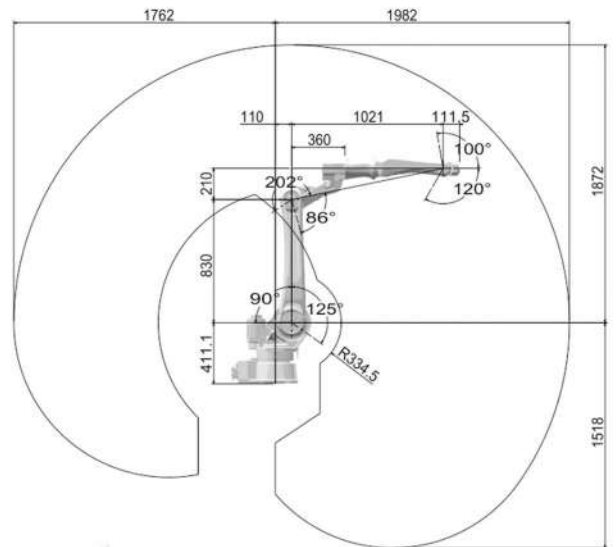


RM 2000/6 HW



Specification	
Number of axis	6(J 1, J 2, J 3, J 4, J 5, J 6)
Working range	2000mm
Rated payload	6 kg
Repeatability	±0.08mm
Mounting position	Floor, wall, ceiling
Protection	
Protection rating	IP65
Controller	
Controller	RMC 203
Control system	Senou Lite
Electrical connections	
Supply voltage	220V
Power consumption(average)	4.5 kwh
Physical	
Weight	195 kg
Environment	
Temperature during operation	0-45°
Humidity	20-80%(no condensation)
Noise level	< 85 db

Axis	Working range	Max. speed
J 1	-180°/+180°	165°/S
J 2	-125°/+90°	155°/S
J 3	-86°/+202°	216°/S
J 4	-170°/+170°	317°/S
J 5	-120°/+100°	309°/S
J 6	-540°/+540°	309°/S

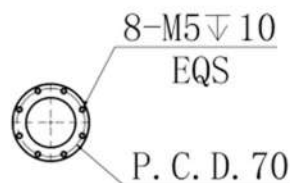
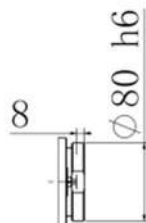
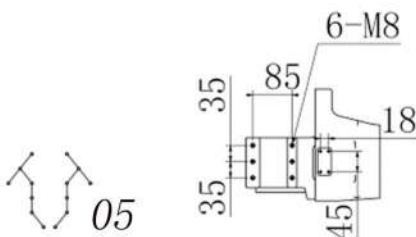
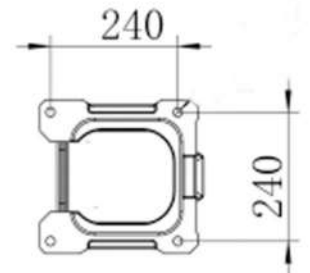
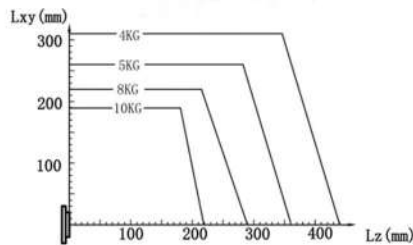
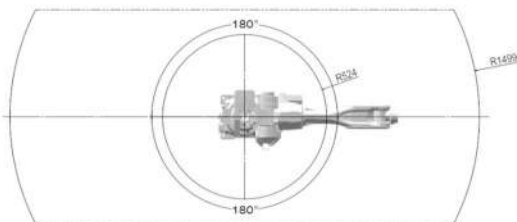
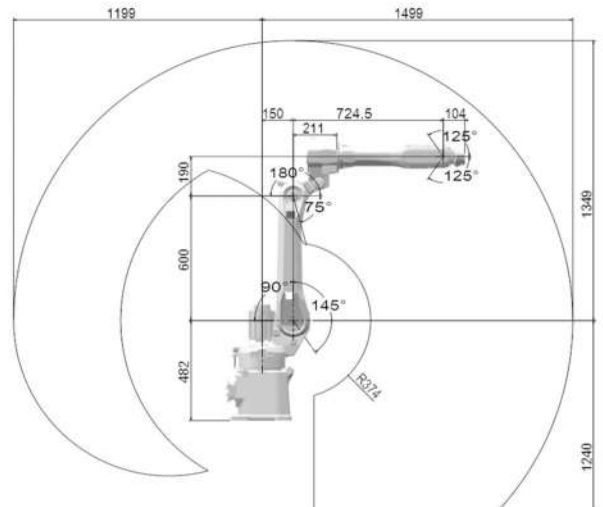


RM 1500/10

Specification	
Number of axis	6(J 1, J 2, J 3, J 4, J 5, J 6)
Working range	1500mm
Rated payload	10 kg
Repeatability	±0.08mm
Mounting position	Floor, wall, ceiling
Protection	
Protection rating	IP54
Cotroller	
Controller	RMC 203
Control system	Senou Lite
Electrial connections	
Supply voltage	220V
Power consumption(average)	3 kwh
Physical	
Weight	142 kg
Environment	
Temperature during operation	0-45°
Humidity	20-80%(no congensation)
Noise level	< 85 db



Axis	Working range	Max. speed
J 1	-180°/+180°	165°/S
J 2	-145°/+90°	155°/S
J 3	-80°/+180°	216°/S
J 4	-170°/+170°	317°/S
J 5	-110°/+110°	309°/S
J 6	-360°/+360°	309°/S



MetaMIG 350 SYN

Features:

1. Synergic control MIG/MAG process as standard for 0.8/1.0/1.2/1.6 mm solid wire (carbon steel).
2. Based on full-digit system controlling precisely the droplet transfer process, ensuring continuously stable welding quality.
3. MIG/MAG welding power source based on inverter technology. Advanced in energy saving and high in reliability.
4. Full digital-control wire-feeding system of high precision and stability, even under changes of external conditions.

Specification		
Model	MetaMIG 350 SYN	MetaMIG 500 SYN
Control Mode	Full Digital-control	
Welding Process for Robotic	GMAW (CO ₂ or mixed-gas); FCAW	
Synergic Control	Available as standard	
Pulse MIG/MAG	N/A	
Rated Input Voltage	AC 3PH 380V +/- 15%	
Input Frequency	50/60 HZ	
Rated Input Power	13.9 KVA	24.7 KVA
Power Factor	0.93	
Efficiency	85%	
Rated OCV	75 V	80 V
Rated Output Current	40 ~ 350 A	40 ~ 500 A
Rated Output Voltage	16 ~ 31.5 V	16 ~ 39 V
Wire-feeding speed	1.5 ~ 20 m/min	
Duty Cycle	60%	60%
Wire Diameter	0.8 / 1.0 / 1.2 mm	0.8 / 1.0 / 1.2 / 1.6 mm
Welding Operational Mode	-	-
Electromagnetic Compatibility	EN 60974-10	EN 60974-10
Ingress Protection	IP 21S	IP 21S
Insulation Grade	F	F
Working Temperature	-10°C ~ +40°C	
Dimension	710 (L) * 320 (W) * 480 (H) mm	
Gross Weight	35.7 KG	



MetaMIG 500 Pulse

Features:

1. Pulse MIG/MAG and synergic MIG/MAG process as standard for 0.8/1.0/1.2/1.6 mm solid wire (carbon steel).
2. Based on full-digit system controlling precisely the droplet transfer process, ensuring continuously stable welding quality.
3. MIG/MAG welding power source based on inverter technology. Advanced in energy saving and high in reliability.
4. Full digital-control wire-feeding system of high precision and stability, even under changes of external conditions.

Specification		
Model	MetaMIG 350 Pulse	MetaMIG 500 Pulse
Control Mode	Full Digital-control	
Welding Process for Robotic	GMAW (CO ₂ or mixed-gas); FCAW	
Synergic Control	Available as standard	
Pulse MIG/MAG	Available as standard	
Rated Input Voltage	AC 3PH 380V +/- 15%	
Input Frequency	50/60 HZ	
Rated Input Power	13.9 KVA	24.7 KVA
Power Factor	0.93	
Efficiency	85%	
Rated OCV	75 V	80 V
Rated Output Current	40 ~ 350 A	40 ~ 500 A
Rated Output Voltage	16 ~ 31.5 V	16 ~ 39 V
Wire-feeding speed	1.5 ~ 20 m/min	
Duty Cycle	60%	60%
Wire Diameter	0.8 / 1.0 / 1.2 mm	0.8 / 1.0 / 1.2 / 1.6 mm
Welding Operational Mode	-	-
Electromagnetic Compatibility	EN 60974-10	EN 60974-10
Ingress Protection	IP 21S	IP 21S
Insulation Grade	F	F
Working Temperature	-10°C ~ +40°C	
Dimension	710 (L) * 320 (W) * 480 (H) mm	
Gross Weight	35.7 KG	



MIG-350 RL

Features:

1. Functional for low-spatter synergic MIG/MAG welding, fast spot welding and constant-voltage welding.
2. Capable of welding carbon steel sheet of 1-3mm thickness with featured low-spatter process. Reducing 60% of spatter.
3. Reducing heat-input by 10%-20%, achieving lower distortions for sheet metal.
4. Based on full-digit system controlling precisely the droplet transfer process, ensuring continuously stable welding quality.
5. MIG/MAG welding power source based on inverter technology. Advanced in energy saving and high in reliability.
6. Full digital-control wire-feeding system of high precision and stability, even under changes of external conditions.

Specification	
Model	MIG-350 RL
Control Mode	Full Digital-control
Welding Process for Robotic	Low-spatter GMAW(CO ₂ or mixed-gas)FCAW
Snyergic Control	Available as standard
Rated Input Voltage	AC 3PH 380 V +/- 10 %
Input Frequency	50 HZ
Rated Input Power	14 KVA
Rated OCV	96 V
Rated Output Current	60-350 V
Rated Output Voltage	17-31.5 V
Duty Cycle	60 %
Wire Diameter	0.8 / 1.0 / 1.2 mm
Electromagnetic Compatibility	EN 60974-10
Ingress Protection	IP 23
Insulation Grade	H
Working Temperature	-39°C to +40°C
Dimension	660 (L) * 320 (W) * 560 (H) mm
Gross Weight	55 kg



Robotic MIG/MAG torches



Specification					
Types	Water-cool	Gas-cool / Enclosed-type		Gas-cool / Eco-type	
Model	RMT 500 W	RMT 500 GE	RMT 350 GE	RMT 500	RMT 350
Shock-sensor	Standard	Standard	Standard	Standard	Standard
Rated apmerage (MIG)	550 A	500 A	350 A	500 A	350 A
Rated apmerage (MAG)	500 A	400 A	300 A	400A	300 A
Duty Cycle	60%	60%	60%	60%	60%
Wire Diameter	0.8/1.0/1.2/1.6	0.8/1.0/1.2/1.6	0.8/1.0/1.2	0.8/1.0/1.2/1.6	0.8/1.0/1.2
Torch Neck	Angle	35°	35°	35°	45°
		22° / 45°	22° / 45°	22° / 45°	22° / 35°
	Length	280 mm	250 mm		172 mm
180/250/350/500 mm		165/300/350/400 mm		250/300/350/400 mm	



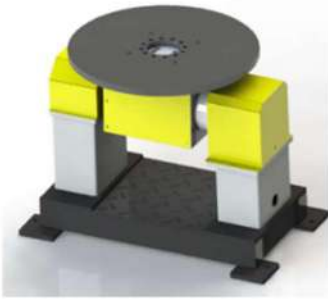
U-type Positioner / 1 Axis		
Model	PY4030A-180	PY4030A-250
Rated Input Voltage	AC 3PH 380V±10% 50/60HZ	
Repeatability	±0.1 mm	
Max. working envelope (mm)	1800 mm * 800 mm	2500 mm * 800 mm
Gross Weight	≈ 600 kg	≈ 800 kg
Handling capacity (kg)	300 kg	500 kg
	500 kg	1000 kg
	-	Customized design for over 1000 kg
Insulation Grade	F	



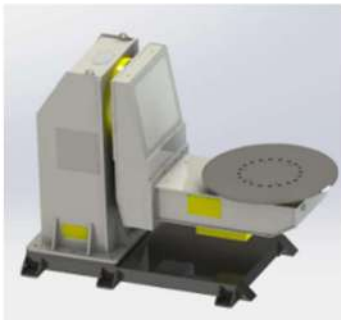
Turn-table / 1 Axis	
Model	PY4030D-080
Rated Input Voltage	AC 3PH 380V±10% 50/60HZ
Repeatability	±0.1 mm
Max. working envelope (mm)	800 mm
Gross Weight	≈ 400 kg
Handling capacity (kg)	300 kg
	500 kg
	1000 kg
	Customized design for over 1000 kg
Insulation Grade	F



L-type Positioner / 1 Axis	
Model	PY4010T-065
Rated Input Voltage	AC 3PH 380V±10% 50/60HZ
Repeatability	±0.1 mm
Max. working envelope (mm)	650 mm * 1000 mm
Gross Weight	≈ 400 kg
Handling capacity (kg)	300 kg
	500 kg
	1000 kg
	Customized design for over 1000 kg
Insulation Grade	F



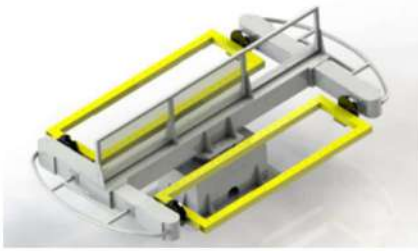
P-type Positioner / 2 Axis	
Model	PY4030P-080
Rated Input Voltage	AC 3PH 380V±10% 50/60HZ
Repeatability	±0.1 mm
Max. working envelope (mm)	800 mm
Gross Weight	≈ 400 kg
Handling capacity (kg)	300 kg
	500 kg
	Customized design for over 500 kg
Insulation Grade	F



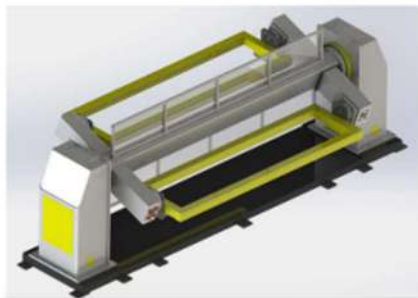
L-type Positioner / 2 Axis	
Model	PY4050L-080
Rated Input Voltage	AC 3PH 380V±10% 50/60HZ
Repeatability	±0.1 mm
Max. working envelope (mm)	650 mm * 1000 mm
Gross Weight	≈ 400 kg
Handling capacity (kg)	500 kg
	1000 kg
	Customized design for over 1000 kg
Insulation Grade	F



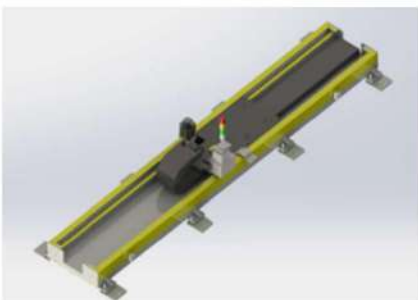
U-type Positioner / 2 Axis		
Model	PY4010U-60	PY4010U-120
Rated Input Voltage	AC 3PH 380V±10% 50/60HZ	
Repeatability	±0.1 mm	
Max. working envelope (mm)	500 mm * 1200 mm	1200 mm * 1200 mm
Gross Weight	Refer to actual weight	
Handling capacity (kg)	500 kg	500 kg
	1000 kg	1000 kg
		Customized design for over 1000 kg
Insulation Grade	F	



Rotating Positioner / 3 Axis		
Model	PY4030S-180	PY4030S-250
Rated Input Voltage	AC 3PH 380V±10% 50/60HZ	
Repeatability	±0.1 mm	
Max. working envelope (mm)	1800 mm * 800 mm	2500 mm * 800 mm
Gross Weight	≈ 1600 kg	
Handling capacity (kg)	100 kg	100 kg
	300 kg	300 kg
	500 kg	500 kg
		Customized design for over 500 kg
Insulation Grade	F	



U-type Positioner / 3 Axis		
Model	PY4030L-180	PY4030S-250
Rated Input Voltage	AC 3PH 380V±10% 50/60HZ	
Repeatability	±0.1 mm	
Max. working envelope (mm)	1800 mm * 800 mm	2500 mm * 800 mm
Gross Weight	Refer to actual weight	
Handling capacity (kg)	100 kg	100 kg
	300 kg	300 kg
	500 kg	500 kg
		Customized design for over 500 kg
Insulation Grade	F	



Track			
Model	PY6030A	PY6050A	PY6100A
Rated Input Voltage	AC 1PH 220V±10% 50/60HZ		
Repeatability	±0.1 mm		
Active length	Refer to actual weight		
Maximum load	Refer to actual weight		
Insulation Grade	F		
Gear	3 m		
Linear guide rail	30		

OFFICE AND PRODUCTS UNIT



ROBOTMETA



AUTHORIZED DISTRUBITOR - GUJARAT



307, 3rd floor Aaryan Workspace, Nr. St Xavier's College Corner, Navrangpura, Ahmedabad - 380009
PH no. (079)-40648585 / 40327575 Cell no. 9879209865 Email ID: Technoquip3593@gmail.com

RobotMeta Technology Co., Ltd

Email: info@robotmeta.com

WhatsApp / Mobile / WeChat: +86 - 13480116593